

Tigercat[®]

LOADER LINE-UP



Tigercat builds four subframe mounted knuckleboom loader models to suit most tree-length and short wood loading applications as well as other diverse work duties required on the deck including slashing, delimiting, sorting and merchandising.

All Tigercat loaders are designed and built for long life and maximum uptime using high quality strength-to-weight optimized steel weldments. Thoughtful machine layout and component placement ensures that routine maintenance is performed quickly and easily.

Overview and applications

220C

With a simple open centre hydraulic system, the Tigercat 220C is a light-weight yet durable loader well suited to shortwood and tree-length loading applications. The 220C can be truck or trailer mounted.



230C

The strength-to-weight optimized boom is well matched to tree-length loading and pull-through delimiting applications in mature pine. Durable construction and simple open centre hydraulics.

234

The 234 is a fast and fuel efficient machine best suited to bar saw slashing and pull-through delimiting in mature softwood and hardwood. The 234 is equipped with a high-pressure, flow-on-demand hydraulic system for excellent fuel economy and swing priority for high performance. The perfect balance between productivity and economy.



250B

With advanced flow-on-demand hydraulics and powerful lift capacity, the 250B is ideal for the most demanding merchandising and loading applications. The strong boom set and powerful swing torque will handle large hardwood timber and the toughest pull-through delimiting.

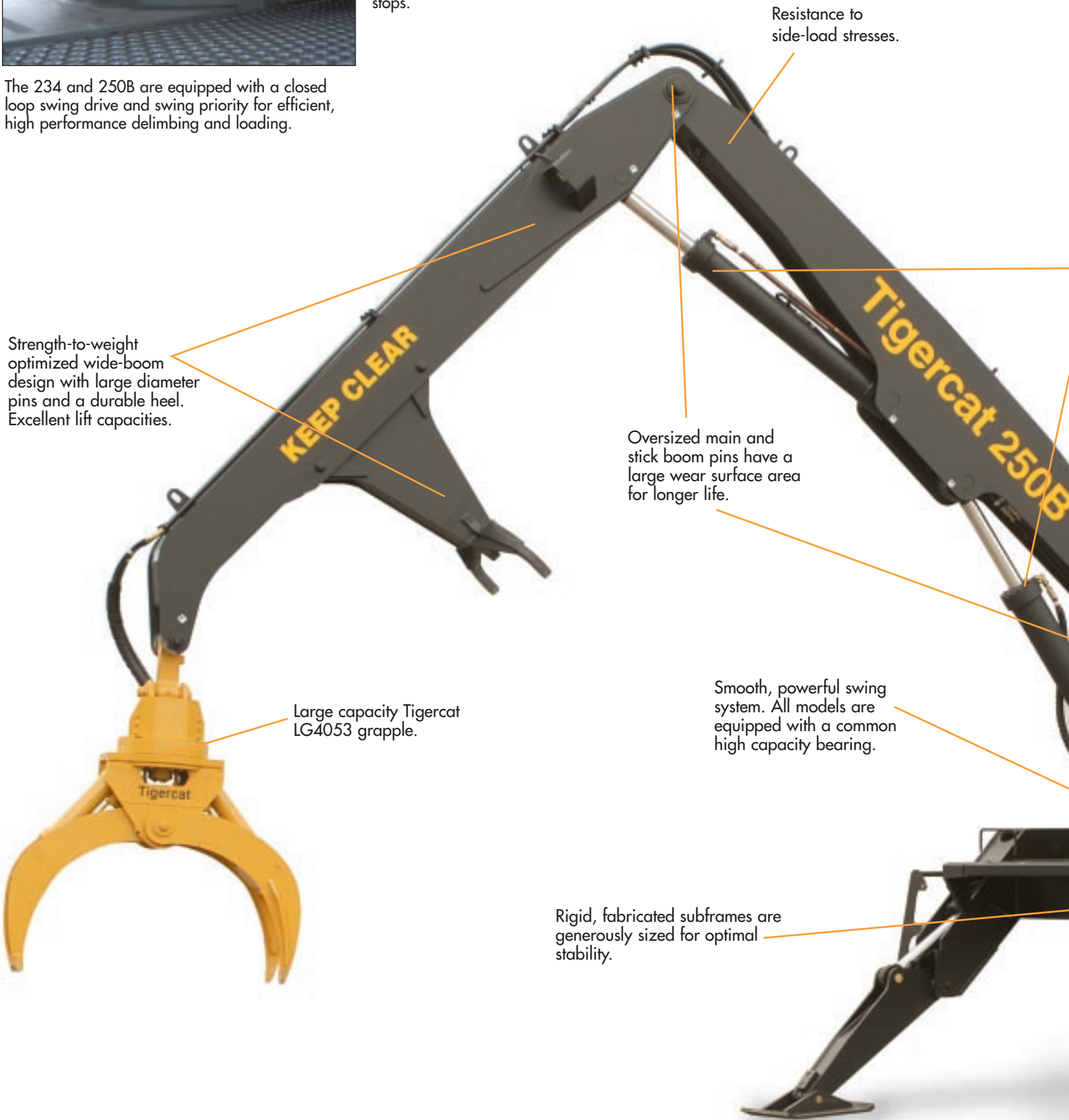


All Tigercat loaders are equipped with a 1 190 mm (47 in) ball circle diameter heavy-duty swing bearing.

The 220C and the 230C have crossline relief valves in the swing motor to provide high-torque starts and smooth stops.

The 234 and 250B are equipped with a closed loop swing drive and swing priority for efficient, high performance delimiting and loading.

Strength-to-weight optimized wide-boom design with large diameter pins and a durable heel. Excellent lift capacities.



Resistance to side-load stresses.

Oversized main and stick boom pins have a large wear surface area for longer life.

Large capacity Tigercat LG4053 grapple.

Smooth, powerful swing system. All models are equipped with a common high capacity bearing.

Rigid, fabricated subframes are generously sized for optimal stability.



Thick steel plate, large diameter pins and high quality cylinders for long machine life and high availability.



All Tigercat loaders offer walk-up platform access to the cab, engine enclosure, valves and planetary gearbox.

Durable, high quality cylinders with bolt-on end caps.

Luxury operator's station. Spacious, quiet and comfortable. All models are equipped with high visibility instrumentation and machine monitoring systems.

Walk-up platform to access cab, engine enclosure, valves and planetary gearbox.



Rear door access to the engine.



Strong steel upper assembly.

Large stabilizer pads.

Large diameter stabilizer cylinders.



Easy access to swing drive components; Integrated toolbox.

Tigercat[®]
Tough • Reliable • Productive

Machines for all occasions

A wide range of weight class and performance capacities. Choice of open centre and load sensing hydraulic systems. A Tigercat loader will match up to nearly any requirement for processing, merchandising and loading softwood and hardwood logs.

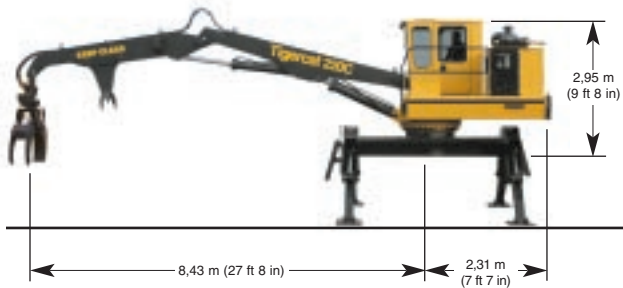


Excellent visibility.

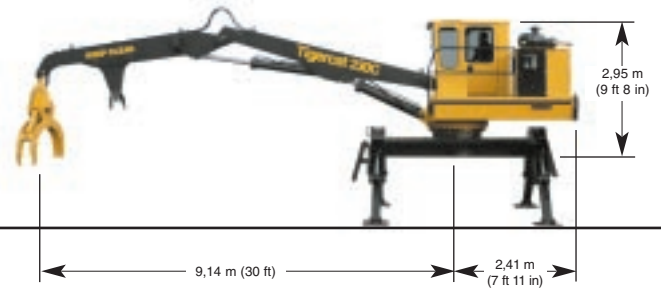
Powerful swing torque and resistance to side-load stresses.



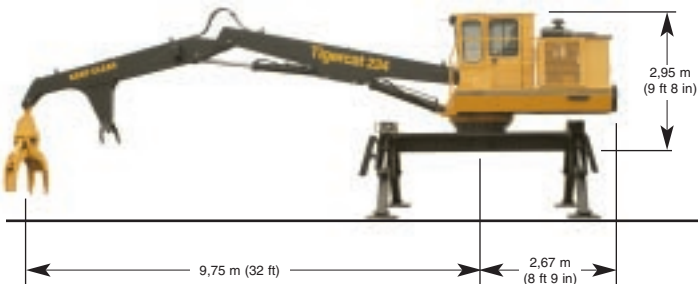
220C



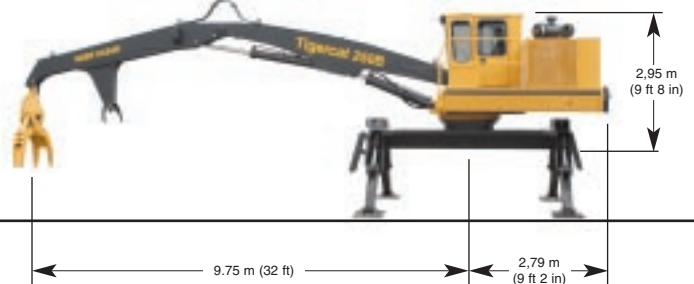
230C



234



250B



SPECIFICATIONS 220C

230C

234

250B

DIMENSIONS

LENGTH less boom.....	4 570 mm (180 in)	4 675 mm (184 in)	4 825 mm (190 in)	5 005 mm (197 in)
SHIPPING HEIGHT	3 430 mm (135 in)	3 430 mm (135 in)	3 430 mm (135 in)	3 430 mm (135 in)
SHIPPING WIDTH.....	2 590 mm (102 in)	2 590 mm (102 in)	2 590 mm (102 in)	2 590 mm (102 in)
WEIGHT less grapple	11 660 kg (25,700 lb)	13 060 kg (28,800 lb)	14 850 kg (32,750 lb)	16 465 kg (36,300 lb)

POWER

ENGINE	Cummins QSB6.7 Tier III, 119 kW (160 hp) @ 2,200 rpm	Cummins QSB6.7 Tier III, 119 kW (160 hp) @ 2,200 rpm	Cummins QSB6.7 Tier III, 129 kW (173 hp) @ 1,800 rpm	Cummins QSB6.7 Tier III, 153 kW (205 hp) @ 1,800 rpm
FUEL CAPACITY	378 L (100 US gal)	378 L (100 US gal)	378 L (100 US gal)	300 L (80 US gal)
COOLING	Aluminum side-by-side radiator, oil cooler and charge air cooler High flow fan	Aluminum side-by-side radiator, oil cooler and charge air cooler High flow fan	Aluminum side-by-side radiator, oil cooler and charge air cooler High flow fan	Aluminum side-by-side radiator, oil cooler and charge air cooler High flow fan

HYDRAULIC SYSTEM

MAIN PUMP	Triple section gear	Triple section gear	Load sensing variable displacement piston	Load sensing, variable displacement piston
SWING PUMP			Pressure compensated piston	Pressure compensated piston
RESERVOIR	225 L (60 US gal)	225 L (60 US gal)	227 L (60 US gal)	245 L (65 US gal)
FILTRATION	(3) spin-on, 7 micron full-flow	(4) spin-on, 7 micron full-flow	(4) spin-on, 7 micron full-flow	(4) spin-on, 7 micron full-flow

SWING SYSTEM

SWING DRIVE	7 rpm, 360° continuous rotation	8 rpm, 360° continuous rotation	9 rpm, 360° continuous rotation	9 rpm, 360° continuous rotation
SWING BEARING	1 190 mm (47 in) ball circle diameter Internal gear teeth Double reduction planetary gearbox	1 190 mm (47 in) ball circle diameter Internal gear teeth Double reduction planetary gearbox	1 190 mm (47 in) ball circle diameter Internal gear teeth Double reduction planetary gearbox	1 190 mm (47 in) ball circle diameter Internal gear teeth Double reduction planetary gearbox

SUBFRAME

LENGTH less steps	3,66 m (144 in)	3,66 m (144 in)	4,29 m (169 in)	4,29 m (169 in)
Support base	3,35 m x 4,65 m (132 in x 183 in)	3,35 m x 4,65 m (132 in x 183 in)	3,81 m x 4,65 m (150 in x 183 in)	3,81 m x 4,65 m (150 in x 183 in)
STABILIZER CYLINDERS	(4) 140 mm (5.5 in) diameter Bolt-on bi-directional lock valves Electrical controls	(4) 140 mm (5.5 in) diameter Bolt-on bi-directional lock valves Electrical controls	(4) 165 mm (6.5 in) diameter Bolt-on bi-directional lock valves Electrical controls	(4) 165 mm (6.5 in) diameter Bolt-on bi-directional lock valves Electrical controls
STABILIZERS/PADS	510 mm x 735 mm (20 in x 29 in)	510 mm x 735 mm (20 in x 29 in)	585 mm x 735 mm (23 in x 29 in)	585 mm x 735 mm (23 in x 29 in)
END FRAMES	Fabricated from steel plate	Fabricated from steel plate	Fabricated from steel plate	Fabricated from steel plate

BOOM

MAXIMUM REACH	8.43 m (332 in)	9.14 m (360 in)	9.75 m (384 in)	9.75 m (384 in)
LIFT CAPACITY				
At 3.2 m (10.5 ft).....	10 890 kg (24,000 lb)	11 800 kg (26,000 lb)	14 740 kg (32,500 lb)	15 875 kg (35,000 lb)
At 7.6 m (25 ft).....	4 265 kg (9,400 lb)	4 990 kg (11,000 lb)	5 490 kg (12,100 lb)	6 350 kg (14,000 lb)
CYLINDER, MAIN	(1) 178 mm (7 in) diameter	(1) 205 mm (8 in) diameter	(1) 165 mm (6.5 in) diameter	(1) 178 mm (7 in) diameter
CYLINDER, STICK.....	(1) 140 mm (5.5 in) diameter	(1) 165 mm (6.5 in) diameter	(1) 140 mm (5.5 in) diameter	(1) 152 mm (6 in) diameter

OPERATOR'S STATION

CAB	Insulated, climate controlled and isolation mounted; Forward sloping, tinted polycarbonate windshield with pantograph wiper, washer and defroster fan; Sliding tinted side windows; 3-speed fan; Dome light Electronic engine monitoring system with LCD display			
SEAT	Heavy duty suspension, fully adjustable	Heavy duty suspension, fully adjustable	Heavy duty suspension, fully adjustable	Heavy duty suspension, fully adjustable

OPERATOR CONTROLS

BOOM	Hydraulic joystick	Hydraulic joystick	Hydraulic joystick	Hydraulic joystick
SWING.....	Foot operated pilot valve	Foot operated pilot valve	Foot operated pilot valve	Foot operated pilot valve
STABILIZERS.....	Electrical controls	Electrical controls	Electrical controls	Electrical controls

ELECTRICAL

BATTERY	(2) 950 CCA, 12 v	(2) 950 CCA, 12 v	(2) 950 CCA, 12 v	(2) 950 CCA, 12 v
ALTERNATOR	80 amp	80 amp	80 amp	80 amp
SYSTEM VOLTAGE	24 v	24 v	24 v	24 v
LIGHTING	Halogen, (2) cab mounted (1) service, engine house	Halogen, (2) boom mounted, separate cab-tire wiring to each; (2) cab mounted (1) service, engine house	Halogen, (2) boom mounted, separate cab-tire wiring to each; (2) cab mounted (1) service, engine house	Halogen, (2) boom mounted, separate cab-tire wiring to each; (2) cab mounted (1) service, engine house

OTHER STANDARD

EQUIPMENT		Delimber/bar saw slasher hydraulics CD stereo system; CB radio	Delimber/bar saw slasher hydraulics CD stereo system; CB radio	Delimber/bar saw slasher hydraulics CD stereo system; CB radio
-----------------	--	---	---	---

OPTIONAL EQUIPMENT

Truck-mount offset		Tigercat LG4053 grapple,	Live heel; Tigercat LG4053 grapple,	Live heel; Tigercat LG4053 grapple,
9,14 m (30 ft) boom; Live heel		other grapples available	continuous rotation	continuous rotation
Self-propelled carrier hydraulics		Self-propelled carrier hydraulics	Other grapples available	Other grapples available
Circle-saw slasher hydraulics				
(2) halogen boom lights; CD stereo system				
CB radio; Various grapple options				

WE RESERVE THE RIGHT TO AMEND THESE SPECIFICATIONS AT ANY TIME WITHOUT NOTICE

40 Consolidated Dr.
P.O. Box 544
Paris, Ontario, Canada
N3L 3T6

Tel: (519) 442-1000
Fax: (519) 442-1855
E-mail: comments@tigercat.com
Internet: www.tigercat.com

