

Tigercat®

**E-SERIES
DRIVE-TO-TREE
FELLER BUNCHERS**



Why buy a Tigercat feller buncher?



PRODUCTIVITY

Tigercat feller bunchers are quick, efficient and highly productive. Equipped with the appropriate Tigercat saw or shear, in-woods performance is unmatched.

UPTIME

The productivity of the entire harvesting system hinges on the feller buncher. Maximizing uptime is essential. Tigercat sets the standard for feller buncher reliability.

LONGEVITY

The ability to run a machine for additional trouble-free years before trading adds to the bottom line. Tigercat feller bunchers last longer and have higher resale values than competing machines.

Overview and applications

718E

Compact, agile and quick; the ultimate machine for first and second plantation row thinnings. The simple design and tough construction are well-proven. Rear visibility, all-important in thinning applications, is unsurpassed.



720E

A versatile feller buncher for plantation thinning and final felling. Advantages include cross-flow cooling and choice of 2-speed or wide-range infinitely variable transmission options.

724E

A heavy-duty final fell machine with a larger front axle and long wheel base. Although suited to mature timber, the 724E is highly maneuverable and an excellent performer in natural stand and plantation thinning applications.



726E

Tigercat's highest production drive-to-tree feller buncher. With a long wheel base, the 726E is very stable - well suited to final felling, natural stands, hardwood, top heavy timber and tough terrain.



Separate compartment for engine air intake.



The cab is isolation mounted, climate controlled and fitted with an extreme-duty ergonomic seat, an easy-reach angled control panel and low-effort joystick controls.



Isolation mounted, climate controlled cab

Sliding side windows

Precision line boring and oversized pins at all pivot points

Skylight serves as emergency exit

Forward sloping windshield sheds water and debris

Strong boom system with well protected cylinders

Boom system offers excellent visibility to the front and superior head tilt capability

All Tigercat drive-to-tree feller bunchers feature Tigercat's legendary centre section. It's constructed with massive steel plate, large pins and tapered roller bearings. The centre section preload prevents play. The Tigercat centre section is backed by a 4-year, 8,000 hour warranty.





The 'reverse' engine orientation directs the pumps and filters to the rear for easy access and improved weight distribution.

Easy access to pumps and filters at working height through the large rear door.



The engine is separated from the coolers and hydraulic components (720E, 724E and 726E only).



Smooth angled roof profile for excellent rearward visibility

Quarter windows for clear view of rear wheels

Strong steps and grab handles

Strong tow eye

Pressurized water system in rear bumper improves machine balance

Hinged steel plate belly pans with recessed bolts

Well protected heat exchangers

Fast saw recovery

Quick access doors on both sides of the machine for daily service checks



The 720E, 724E, and 726E are equipped with cross-flow cooling. Fan speed is automatically governed for optimal fuel efficiency. The 'clean' mode reverses the fan direction to clean the coolers without exiting the cab or halting production.

Although the 718E is not equipped with cross-flow cooling, an engine driven variable pitch fan is used to reverse airflow direction.

Tigercat
Tough • Reliable • Productive

SPECIFICATIONS

718E

720E

724E

726E

DIMENSIONS

	With 23.1 x 26 tires, narrow offset		With 28L x 26 tires, wide offset	
WIDTH	2 540 mm (100 in)	2 540 mm (100 in)	3 000 mm (118 in)	3 000 mm (118 in)
LENGTH less felling head	5 410 mm (213 in)	5 665 mm (223 in)	5 665 mm (223 in)	6 070 mm (239 in)
WHEELBASE	2 745 mm (108 in)	2 920 mm (115 in)	2 920 mm (115 in)	3 050 mm (120 in)
HEIGHT	3 350 mm (132 in)	3 350 mm (132 in)	3 380 mm (133 in)	3 380 mm (133 in)
GROUND CLEARANCE	510 mm (20 in)	510 mm (20 in)	585 mm (23 in)	585 mm (23 in)
with 30.5 x 32 tires.....	685 mm (27 in)	685 mm (27 in)	685 mm (27 in)	685 mm (27 in)
FRAME ARTICULATION	+/- 45°	+/- 45°	+/- 45°	+/- 45°
WEIGHT less felling head	11 160 kg (24,600 lb)	11 950 kg (26,350 lb)	12 240 kg (26,980 lb)	12 765 kg (28,140 lb)

POWER

ENGINE	Cummins QSB6.7 Tier III	Cummins QSB6.7 Tier III	Cummins QSB6.7 Tier III	Cummins QSB8.3 Tier III
	129 kW (173 hp) @ 2,200 rpm	142 kW (190 hp) @ 2,300 rpm	164 kW (220 hp) @ 2,200 rpm	172 kW (230 hp) @ 2,200 rpm
	Precleaner and 2-stage engine air cleaner	Precleaner and 2-stage engine air cleaner	Precleaner and 2-stage engine air cleaner	Precleaner and 2-stage engine air cleaner
COOLING.....	Side-by-side aluminum radiator, oil cooler and charge air cooler	Side-by-side aluminum radiator, oil cooler and charge air cooler; Cross-flow; Automatic fan	Side-by-side aluminum radiator, oil cooler and charge air cooler; Cross-flow; Automatic fan	Side-by-side aluminum radiator, oil cooler and charge air cooler; Cross-flow; Automatic fan
	Flexxaire® reversing fan	speed control; Reverse direction clean mode	speed control; Reverse direction clean mode	speed control; Reverse direction clean mode
FUEL CAPACITY (usable)	314 L (83 US gal)	340 L (90 US gal)	340 L (90 US gal)	475 L (125 US gal)

POWER TRAIN

HYDROSTATIC	Variable displacement piston pump	Variable displacement piston pump	Variable displacement piston pump	Variable displacement piston pump
	Variable displacement piston motor	Variable displacement piston motor	Variable displacement piston motor	Variable displacement piston motor
TRANSFER CASE.....	2-speed mechanical shift	2-speed mechanical shift	2-speed mechanical shift	2-speed mechanical shift
AXLES	Front fixed, 1200 series	Front fixed, 1200 series	Front fixed, 1400 series	Front fixed, 1400 series
	Rear oscillating +/- 15°, 1200 series; Independent differential locks, front and rear	Rear oscillating +/- 15°, 1200 series; Independent differential locks, front and rear	Rear oscillating +/- 15°, 1200 series; Independent differential locks, front and rear	Rear oscillating +/- 15°, 1200 series; Independent differential locks, front and rear

HYDRAULIC SYSTEM

BOOM PUMP	Fixed displacement gear	Fixed displacement gear	Fixed displacement gear	Fixed displacement gear
STEERING PUMP.....	Fixed displacement gear	Fixed displacement gear	Fixed displacement gear	Fixed displacement gear
SAW PUMP	Dedicated variable displacement piston	Dedicated variable displacement piston	Dedicated variable displacement piston	Dedicated variable displacement piston
FAN PUMP	N/A	Fixed displacement gear	Fixed displacement gear	Fixed displacement gear
RESERVOIR	147 L (39 US gal)	160 L (42 US gal)	160 L (42 US gal)	215 L (57 US gal)
FILTRATION	(5) 7 micron full flow, spin-on	(5) 7 micron full flow, spin-on	(5) 7 micron full flow, spin-on	(5) 7 micron full flow, spin-on
BOOM CYLINDERS	(4) 115 mm (4.5 in) bore lift and tilt	(4) 115 mm (4.5 in) bore lift and tilt	(4) 115 mm (4.5 in) bore lift and tilt	(4) 115 mm (4.5 in) bore lift and tilt
STEER CYLINDERS	(2) 75 mm (3 in) bore	(2) 75 mm (3 in) bore	(2) 75 mm (3 in) bore	(2) 75 mm (3 in) bore

BRAKES

DYNAMIC BRAKING	Hydrostatic	Hydrostatic	Hydrostatic	Hydrostatic
SECONDARY BRAKES.....	Enclosed, oil cooled	Enclosed, oil cooled	Enclosed, oil cooled	Enclosed, oil cooled
PARK BRAKE.....	Driveline mounted wet disc type; Spring applied, hydraulic release	Driveline mounted wet disc type; Spring applied, hydraulic release	Driveline mounted wet disc type; Spring applied, hydraulic release	Driveline mounted wet disc type; Spring applied, hydraulic release

TIRES

STANDARD	23.1 x 26	23.1 x 26	28L x 26	28L x 26
OPTIONAL	24.5 x 32 - 16; 28L x 26	28L x 26; 30.5L x 32	30.5L x 32; 67 x 34 - 25	30.5L x 32 - 16, 18 ply
	30.5L x 32 - 16; 67 x 34 - 25	67 x 34 - 25; 73 x 44 - 32	73 x 44 - 32	67 x 34 - 25, 14 ply
				73 x 44 - 32

OTHER STANDARD EQUIPMENT

Pressurized water system	Pressurized water system	Pressurized water system	Pressurized water system
Back-up alarm; Low fuel light	Back-up alarm; Low fuel light	Back-up alarm; Low fuel light	Back-up alarm; Low fuel light
Hydraulic reservoir hand fill pump; Fire extinguisher	Hydraulic reservoir hand fill pump; Fire extinguisher	Hydraulic reservoir hand fill pump; Fire extinguisher	Hydraulic reservoir hand fill pump; Fire extinguisher
Easily cleaned radiator air intake screens			

SPECIFICATIONS 718E 720E 724E 726E

ELECTRICAL

BATTERY	(2) 12 v	(2) 12 v	(2) 12 v	(2) 12 v
ALTERNATOR	80 amp, 24 v	80 amp, 24 v	80 amp, 24 v	80 amp, 24 v
SYSTEM VOLTAGE	24 v	24 v	24 v	24 v

OPERATOR STATION

CABInsulated, pressurized and isolation mounted; A/C, heater, defroster; Forward sloping polycarbonate windshield; (3) Rear polycarbonate windows; (2) Doors with sliding tempered glass windows and hinged steel mesh screens; Removable polycarbonate skylight; AM/FM digital stereo with CD player
12 v powerpoint; 24 v lighter

CONTROLS..... Hydraulic pilot for boom and travel; Hydraulic pilot joystick steering

SEAT Full suspension, fully adjustable with angled mounting; Armrest mounted joysticks

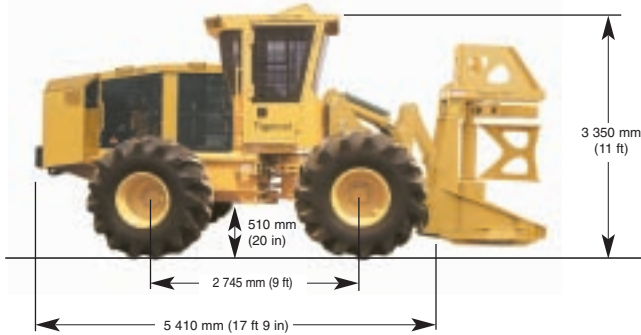
OPTIONAL EQUIPMENT

Work lights	Wide range infinitely.....	Wide range infinitely.....	Wide range infinitely.....
Quick wheel steering	variable transmission	variable transmission	variable transmission
CB radio	Work lights	Work lights	Work lights
Fire detection system	Quick wheel steering	Quick wheel steering	Quick wheel steering
	CB radio	CB radio	CB radio
	Fire detection system	Fire detection system	Fire detection system

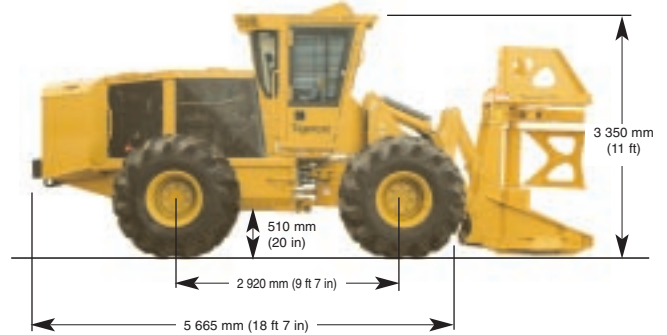
FELLING HEAD Choice of Tigercat saws and shears

TIGERCAT RESERVES THE RIGHT TO AMEND THESE SPECIFICATIONS AT ANY TIME WITHOUT NOTICE.

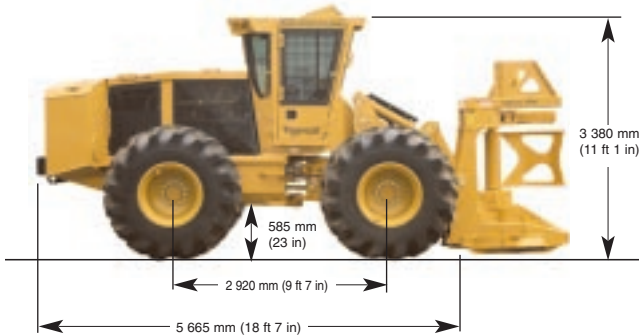
718E



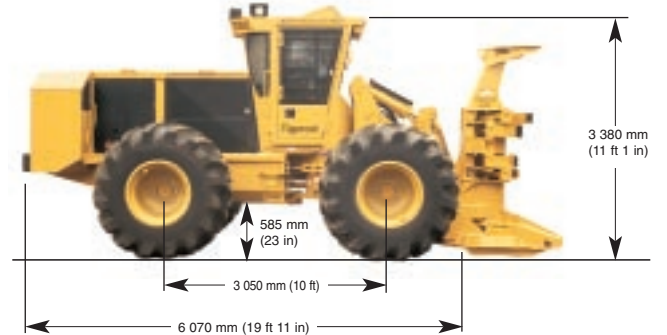
720E



724E



726E



40 Consolidated Dr.
P.O. Box 544
Paris, Ontario, Canada
N3L 3T6

Tel: (519) 442-1000
Fax: (519) 442-1855
E-mail: comments@tigercat.com
Internet: www.tigercat.com

