



Tigercat®

860C/870C FELLER BUNCHER

The 860C/870C feller bunchers are designed for demanding large timber and high cycle final fell applications.

BENEFITS AND ADVANTAGES:

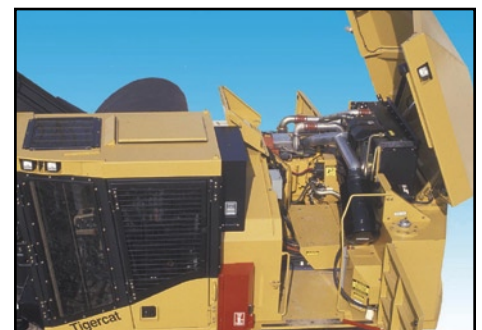
- **Powerful Cummins QSL9 224 kW (300 hp) Tier III engine**
- **Efficient high-capacity cooling system**
 - Automatic variable fan speed for improved fuel efficiency
 - Automatic reversing cycle to easily clean the heat exchangers
- **Excellent service access**
 - Retracting clamshell style engine enclosure and easy access to the engine, valves and coolers
- **Separate compartment houses pump stack**
 - Easy access to pumps; large clean-out underneath
- **Tigercat-built forest duty undercarriages**
 - Long track frames and wide stance carbody for excellent stability
- **Highly durable design and construction**
 - One piece 32 mm (1.25 in) thick turntable
 - Large diameter, heavy duty swing bearing
- **Quiet, climate controlled operator's station**
 - High output heater/air conditioner with multiple vents
 - Extreme duty air-ride suspension seat
 - Full length front window for clear view of tracks



Two-cylinder or three-motor drive high rotation wrist options



Choice of halogen or HID lighting systems for night operation



Easy access to the components through hydraulically retracting hood enclosure

SPECIFICATIONS

860C

870C

DIMENSIONS with standard single grouser shoes

WIDTH with steps.....	3 435 mm (135 in)	3 400 mm (134 in)
LENGTH less boom	5 380 mm (212 in)	5 540 mm (218 in)
HEIGHT less skylight	3 300 mm (130 in)	3 300 mm (130 in)
GROUND CLEARANCE.....	710 mm (28 in)	710 mm (28 in)
WEIGHT less head/boom adapter.....	29 260 kg (64,500 lb)	31 300 kg (69,000 lb)
TAIL SWING over side.....	1 445 mm (57 in)	1 420 mm (56 in)

POWER

ENGINE.....	Cummins QSL9 Tier III, 224 kW (300 hp) @ 1800 rpm	Cummins QSL9 Tier III, 224 kW (300 hp) @ 1800 rpm
	Precleaner and 2-stage engine air cleaner	Precleaner and 2-stage engine air cleaner
COOLING	Side by side radiator, oil cooler and charge air cooler.....	Side by side radiator, oil cooler and charge air cooler
	Removable intake debris screen	Removable intake debris screen
FAN.....	Hydraulically driven, automatic variable speed, reversible.....	Hydraulically driven, automatic variable speed, reversible
FUEL CAPACITY usable	970 L (257 US gal)	970 L (257 US gal)

HYDRAULIC SYSTEM

PUMP, MAIN.....	Piston	Piston
PUMP, SAW.....	Piston	Piston
PUMP, WRIST/SAW ARMS.....	Piston	Piston
PUMP, COOLING FAN	Gear	Gear
RESERVOIR.....	190 L (50 US gal).....	190 L (50 US gal)
FILTRATION	(6) spin-on, 7 micron full flow.....	(6) spin-on, 7 micron full flow
CYLINDERS, HOIST	(2) 120 mm (4.7 in) bore	(2) 120 mm (4.7 in) bore
CYLINDERS, STICK/ER	(2) 110 mm (4.3 in) bore	(2) 110 mm (4.3 in) bore
CYLINDER, TILT	130 mm (5.2 in) bore.....	130 mm (5.2 in) bore
HORSE POWER CONTROL	Electronic speed sensing type; Antistall @ 1,700 rpm.....	Electronic speed sensing type; Antistall @ 1,700 rpm

UNDERCARRIAGE

TRACK FRAMES	R6140-5 heavy-duty forestry	R7150 super-duty forestry
	Integral track guides and ramp angles	Integral track guides and ramp angles
TRACK CHAIN	F8/D6D 203 mm (8 in) pitch sealed and greased.....	FH400 215 mm (8.5 in) pitch
FINAL DRIVE	(2) axial piston motors; Infinitely variable speed.....	(2) axial piston motors; Infinitely variable speed
TRACTIVE EFFORT	275 kN (62,000 lbf).....	334 kN (75,000 lbf)
GEARBOX.....	Triple reduction planetary type with brake	Triple reduction planetary type with brake
FRONT IDLER.....	Hydraulic track adjuster; Spring shock absorber	Hydraulic track adjuster; Spring shock absorber
SLIDES, UPPER	Replaceable, bolt-on; Optional rollers.....	Replaceable, bolt-on
ROLLERS, LOWER.....	(9) D6 single and double flange tractor type.....	(9) FH400 excavator type
TRACK SHOE	710 mm (28 in) single grouser tri-track.....	610 mm (24 in) single grouser
Optional	760 mm (30 in) double grouser tri-track	710 mm (28 in) single grouser
	915 mm (36 in) triple grouser tri-track	



Separate, easily accessed pumpstack



Excellent view of tracks tips



Access to all sides of the engine



High capacity variable speed cooling



Rear air intake away from saw debris



Tidy engine house layout

SPECIFICATIONS

860C

870C

TOP SPEED

LOW RANGE.....	1,9 km/h (1.2 mph)	1,5 km/h (0.9 mph)
HIGH RANGE.....	4,2 km/h (2.6 mph)	4,2 km/h (2.6 mph)

BRAKES

TRACK	Friction disc type; Automatic spring applied, hydraulic release	Friction disc type; Automatic spring applied, hydraulic release
SWING	Friction disc type; Manual spring applied, hydraulic release	Friction disc type; Manual spring applied, hydraulic release

ROTATING UPPER

SWING DRIVE	7 rpm variable speed; 360° continuous rotation; Double reduction, swing drive planetary gearbox with brake; Piston swing motor
SWING BEARING	1 190 mm (47 in) ball circle diameter
ENCLOSURE	Hydraulically operated engine enclosure; Rear air intake for cooling system and engine; Vandal protection; Smooth exterior

ER BOOM SYSTEM with 30° wrist, 5702 saw

MAXIMUM CUT RADIUS	8 460 mm (333 in)	8 460 mm (333 in)
MINIMUM CUT RADIUS	4 800 mm (189 in)	4 800 mm (189 in)
BARE PIN LIFT full reach	8 435 kg (18,600 lb)	8 435 kg (18,600 lb)

OPERATOR'S STATION

CAB	Insulated, pressurized and isolation mounted A/C, heater, defroster with side-mount controls; Skylight or flat hatch Full length polycarbonate windshield/entry door; Polycarbonate right-side and rear windows; Tempered glass side door window with screen High visibility machine monitoring system with warning horns; AM/FM digital stereo with CD player; (2) power points
CONTROLS.....	Hydraulic proportional boom/travel/swing; IQAN electronic proportional for accumulating/clamp arms/wrist Electric switch for swing brake/speed range
SEAT	Full suspension air ride, fully adjustable with angled mounting; Armrest mounted Tigercat joysticks

ELECTRICAL

BATTERY	(4) 12 v	(4) 12 v
ALTERNATOR	110 amp, 24 v	110 amp, 24 v
SYSTEM VOLTAGE	24 v	24 v
LIGHTING	(8) Halogen; (4) Service lights, engine enclosure	(8) Halogen; (4) Service lights, engine enclosure
Optional	(7) HID; (2) Halogen; (6) Service lights, engine enclosure	(7) HID; (2) Halogen; (6) Service lights, engine enclosure

OTHER STANDARD EQUIPMENT

Power-link; Fuel suction strainer; Alarm for track movement	Power-link; Fuel suction strainer; Alarm for track movement
---	---

OPTIONAL EQUIPMENT

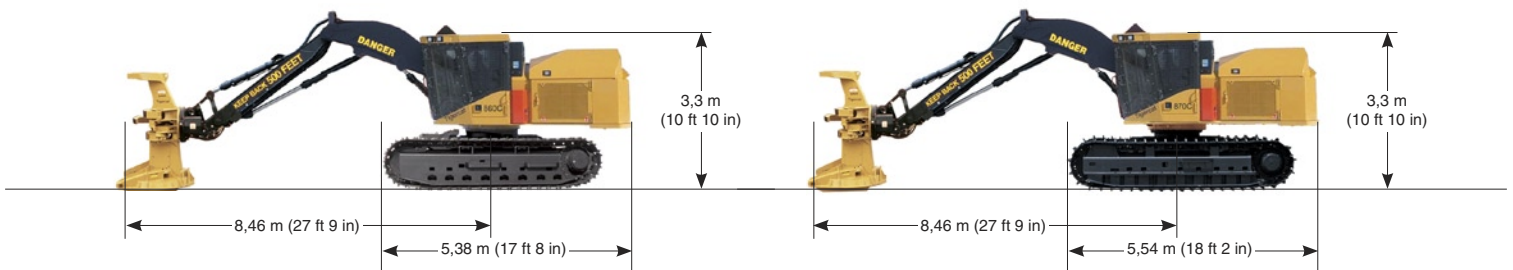
Various counter weights; High rotation wrists: 110°, 340°	Various counter weights; High rotation wrists: 110°, 340°
R6152, F6155 undercarriages; Bolt-on toolbox; Cold weather kit.....	Bolt-on full-length rock guards; Bolt-on toolbox; Cold weather kit

FELLING HEAD

Flexible hydraulic system to accept various felling heads.....	Flexible hydraulic system to accept various felling heads
--	---

TIGERCAT RESERVES THE RIGHT TO AMEND THESE SPECIFICATIONS AT ANY TIME WITHOUT NOTICE

860C/870C FELLER BUNCHER



40 Consolidated Dr.
P.O. Box 544
Paris, Ontario
Canada, N3L 3T6

E-mail: comments@tigercat.com
Internet: www.tigercat.com
Tel: (519) 442-1000
Fax: (519) 442-1855

Tigercat[®]