

Tigercat®

604C CABLE SKIDDER



The Tigercat 604C is a quick, compact, fuel efficient cable skidder well suited to selective thinning hardwood applications.

BENEFITS AND ADVANTAGES:

- **Powerful and efficient Cummins Tier III engine**
- **Enhanced hydrostatic drive system**
 - Automatic variable engine speed for excellent fuel efficiency
 - Operator controlled minimum engine rpm setting
 - Operator controlled maximum speed setting
- **IQAN computer control system**
 - Monitors engine operating parameters
 - Built-in trouble shooting capabilities
- **Designed and built for extreme duty conditions**
 - Strength optimized frames
 - Robust, well-protected cylinders
 - Strong center section with large pins and tapered roller bearings; 3 year/6,000 hour center section warranty
- **Excellent service access**
 - Easy access to all engine service points
 - Tilt cab for access to pumps, motors and driveline
- **Spacious operator's station**
 - Excellent visibility in all directions



Large, easy access tool and chainsaw storage area.



Spacious, well designed engine compartment.



Powerful pulling capacity for reduced cost per ton.

SPECIFICATIONS

DIMENSIONS (23.1 x 26 tires)

LENGTH	6 605 mm (260 in)
WHEELBASE	3 605 mm (142 in)
WIDTH.....	2 640 mm (104 in)
HEIGHT	3 050 mm (120 in)
GROUND CLEARANCE	510 mm (20 in)
WEIGHT	11 795 kg (26,000 lb)

POWER

ENGINE	Cummins QSB6.7, 142 kW (190 hp) Tier III 2-stage engine air cleaner
TOP SPEED	18 km/hr (11 mph)
COOLING	Side-by-side aluminum radiator, oil cooler and charge air cooler
FAN	Engine driven blower
FUEL TANK	175 L (46 US gal) usable

POWER TRAIN

TRANSMISSION	Single-speed mechanical Variable speed hydrostatic (2) variable displacement motors
AXLE, FRONT	Outboard planetary, 15° oscillating
AXLE, REAR	Outboard planetary, fixed
DIFFERENTIAL LOCKS	Independent front and rear

HYDRAULIC SYSTEM

DRIVE PUMP	Variable displacement axial piston
MAIN PUMP 1	Variable displacement axial piston for all machine functions
MAIN PUMP 2	Fixed displacement gear for cooling
FILTRATION	10 micron, absolute
CYLINDERS, STEER.....	(2) 85 mm (3.25 in) bore
CYLINDERS, BLADE.....	(2) 75 mm (3 in) bore
RESERVOIR	90 L (24 US gal)

BRAKES

DYNAMIC BRAKING	Hydrostatic
SECONDARY BRAKES	Enclosed, oil cooled
PARK BRAKE	Spring applied, hydraulic release Wet disc type

TIRES

STANDARD.....	23.1 x 26
OPTIONAL	Up to 30,5L x 32

WINCH

LINE PULL at any engine rpm	
BARE DRUM	18 140 kg (40,000 lb)
FULL DRUM	11 795 kg (26,000 lb)
LINE SPEED at 2,200 rpm	
BARE DRUM	35 m (115 ft) per min
FULL DRUM	53 m (175 ft) per min
BARREL DIAMETER	305 mm (12 in)
BARREL WIDTH	200 mm (8 in)
CAPACITY with 3/4 in. cable	65 m (215 ft)
CAPACITY with 7/8 in. cable	49 m (160 ft)
CAPACITY with 1 in. cable	28 m (92 ft)

OPERATOR'S STATION

CAB.....	(2) doors, with screens; Forward sloping windshield Machine monitoring system with LCD display
SEAT.....	Extreme duty, fully adjustable with armrests Seat and all controls rotated 40° to the right
CONTROLS	IQAN computer control
STEERING	Quick steer Optional
	Variable rate Orbitrol™

ELECTRICAL

BATTERY	(2) 12 v
ALTERNATOR	80 amp, 24 v
SYSTEM VOLTAGE	24 v

OTHER STANDARD EQUIPMENT

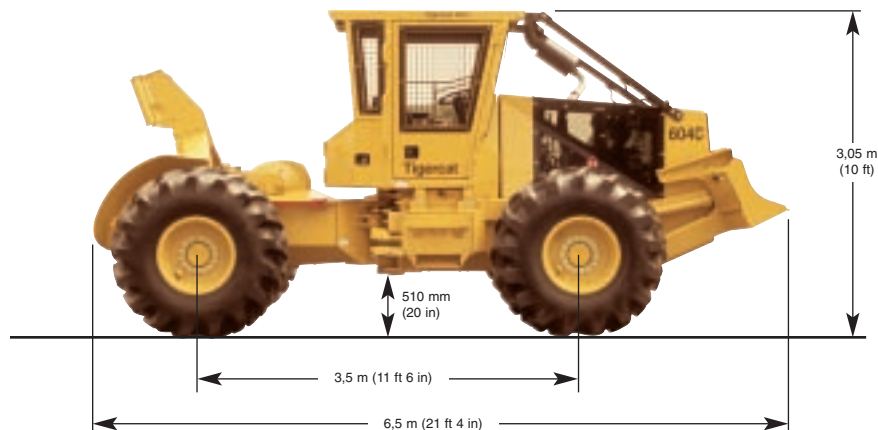
Fenders; Back-up alarm; Fuel suction strainer; Fire extinguisher

OPTIONAL EQUIPMENT

Halogen lighting package
Pressurized water system
Engine air precleaner
Cab enclosure kit
Cold weather kit

WE RESERVE THE RIGHT TO AMEND THESE SPECIFICATIONS AT ANY TIME WITHOUT NOTICE.

TIGERCAT 604C CABLE SKIDDER



40 Consolidated Dr.
P.O. Box 544
Paris, Ontario, Canada
N3L 3T6

Tel: (519) 442-1000
Fax: (519) 442-1855
E-mail: comments@tigercat.com
Internet: www.tigercat.com

Tigercat[®]
Tough • Reliable • Productive